

RateMon Health Guardian System Product Introduction

I. Product Name

RateMon Health Guardian System

- Product Name: Heart Rate/Respiratory/Human Body Posture Detection Remote Sensor
- Main device: remote non-contact monitoring of static heart rate, respiration rate, sleep, gait, falls
- Auxiliary device (optional): remote non-contact monitoring of respiration rate, sleep, gait, falls

This product is an intelligent monitoring device based on AI edge computing. It enables real-time detection of heart rate, respiration rate, and body posture without the need for wearing or physical contact, making it suitable for long-term and dynamic vital sign monitoring.



II. Product Applications

- It is suitable for long-term medical, health and safety monitoring of the elderly at home
- It is used for daily monitoring of patients with chronic diseases such as cardiovascular diseases, diabetic complications, and geriatric cognitive impairment
- Long-term dynamic tracking and abnormal monitoring of patients after cardiac stenting
- Adjunctive monitoring of critical and postoperative graded care in hospitals

III. Alert Reporting System

- **Instant Safety Alerts:** Fall detection, abnormal resting heart rate, abnormal static respiration rate, prolonged bed stay, prolonged absence from home, etc.
- **Trend Event Notifications:** Continuous decline in sleep quality, persistent gait abnormalities, consistently high heart rate, abnormal nighttime respiration rate, etc.

- **AI Analytical Reports:** In-depth analysis of abnormalities based on a medical knowledge base, providing guidance on next steps.

IV. Device Usage Guide

- The **main device** should be placed in frequently used areas such as the living room or study. The optimal monitoring distance is **2.5-3.5 meters**, with automatic daily monitoring.
- The **auxiliary device** is recommended for placement in the bedroom or bathroom to assist in monitoring falls and sleep. Detection range can reach **7-8 meters**.
- **No need for users to wear the device**—simply plug it in and enjoy 24/7 automated monitoring.

V. Product Features

- **Non-contact and wearable-free for user convenience.**
- **Privacy protection**—no video or image transmission.
- **Intelligent identification of family members** for personalized health data recording.
- **Adaptive learning** of home layout changes to maintain long-term monitoring accuracy.
- **Instant abnormality notifications** for timely intervention and enhanced health safety.

VI. Hardware Specifications

Main Device:

- **CPU:** Hexa-core (Dual-core ARM Cortex-A72 + Quad-core ARM Cortex-A53)
- **Memory:** 4G Flash
- **Sensors:** 500M Optical Sensor + 60GHz Millimeter-Wave Radar
- **Network:** Wi-Fi, Ethernet, BLE 5.1, 4G/5G CAT1
- **Dimensions:** 152 x 88 x 55 mm

Auxiliary Device:

- **CPU:** ARC CUP 300MHz
- **Memory:** 576K
- **Sensors:** 60GHz Millimeter-Wave Radar
- **Network:** BLE 5.1

- **Dimensions:** 10 x 76 x 29 mm

VII. Technical Solution

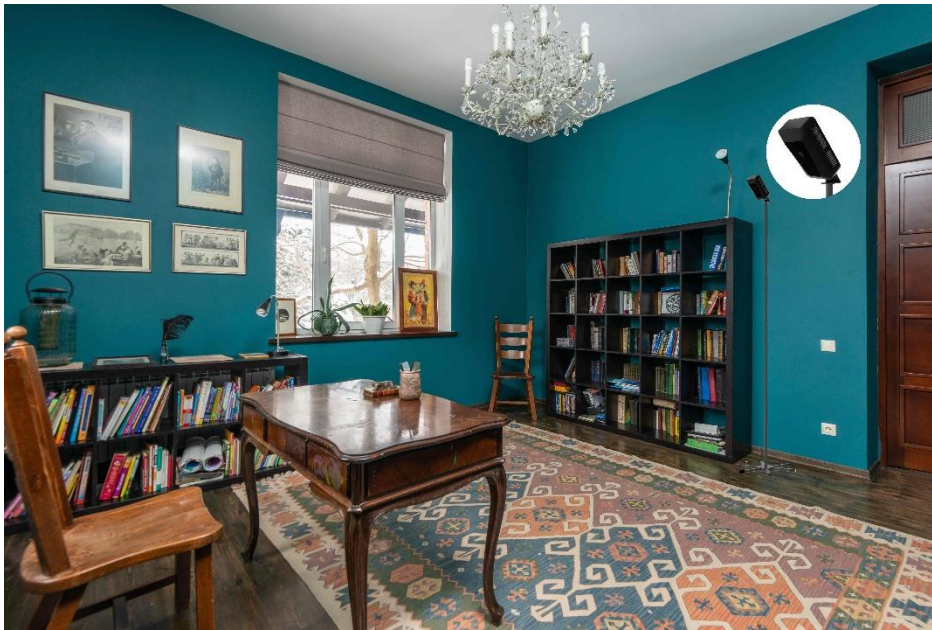
- **Real-time data processing and user identification** using edge computing and AI models.
- **Precise remote monitoring** of respiration rate and fall detection using millimeter-wave radar technology.
- **Support for 4G/5G and wired internet connections**, ensuring real-time abnormality alerts.

User choice between cloud storage for data analysis or local Bluetooth access for reports.

VIII. Usage Scenario Gallery



Main device, radar auxiliary device, and stand



Main device placement in study



Main device placement in living room



Radar auxiliary device placement in bedroom



Radar auxiliaries are located in bathroom

Contact

Email: info@ratemon.com

Website: www.ratemon.com

disclaimer

The index data, operating data, test data **and other values contained in this presentation** are based on the company's internal estimates and test results, and are for reference only and do not constitute any form of guarantee or commitment. **The Company makes no warranties, express or implied, as to the accuracy, completeness or suitability of the data.**

The content of this white paper does not constitute investment advice, business decision-making or any legal liability. Before relying on the information provided in this white paper, readers should make their own independent assessment and judgment based on their own needs. **The Company shall not be liable for any direct or indirect damages arising from the use of the contents of this white paper.**